

The Australian owned and designed Trueheat RC Series of Gas Cooking Equipment has been developed to meet the operation needs and highest standards demanded by chefs and restaurant owners within a commercial kitchen.

16mm thick steel griddle plate with 16.5MJ/hr burner per 300mm section.  
100% Flame failure controls included as standard. Piezo ignition on concealed burners.



**Stand sold separately**

#### DIMENSIONS & WEIGHT

External Dimension: 300W x 803D x 455H mm  
Net Weight: 31.8kg  
Working height : 910mm (+/-15mm with stand)  
Combustible wall clearance: Side: 150mm, Rear: 150mm

#### TECHNICAL DATA

Gas Type: Natural or Propane  
Total Output(MJ/hr):      Natural Gas      Propane Gas  
   16.5                      16.5  
Burner Ratings (MJ/hr): Natural Gas      Propane Gas      Ignition Type  
Griddle per 300mm:      16.5                      16.5                      Piezo  
Gas Connection: ¾" Female  
AGA approval number: AGA 6652 G

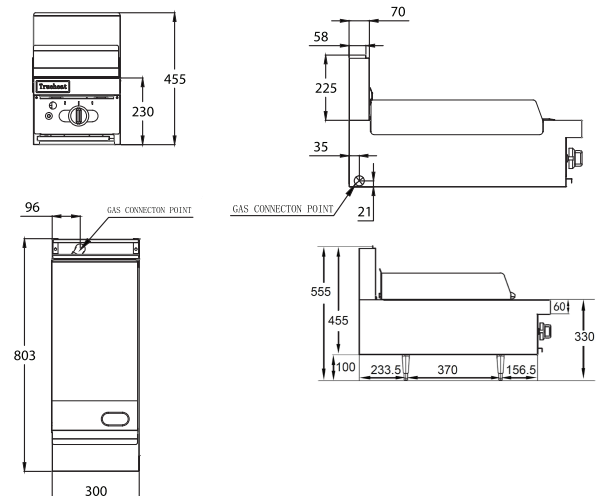
#### SHIPPING DATA

Shipping Weight: 46kg  
Shipping Dimensions: 380W x 900D x 590H mm

#### OPTIONAL ACCESSORIES

Part Number:	Description:
STD3	300mm Stand complete with shelf
S35086	4 legs, 2 brackets, 6 screws (complete set for table top mounting)
432018-900HK	900mm ¾ flexible gas hose with quick connect fittings and restraint
432018-1200HK	1200mm ¾ flexible gas hose with quick connect fittings and restraint

SPECIFICATIONS ARE SUBJECT TO CHANGE WITHOUT NOTICE.



MA005A Trueheat RCT3-3G Specification Sheet Issue 005 | Issue Date: 01/02/2023